

Smart Wireless Video Platform

Ultra-Low Power Wi-Fi Video Processor

Accelerating Time-to-Market for Battery-Based Wi-Fi Video Cameras

InnoPhase IoT and Lumissil/Ingenic have partnered to develop the industry's leading smart wireless video solution. The system combines the InnoPhase IoT Talaria TWO™ ultra-low power Wi-Fi module and Ingenic's T23 Video Processor to create a cutting-edge solution.

- ✓ Ultra-Low-Power (ULP) Wi-Fi at BLE power levels enables 2-4X improvement in battery life.
- ✓ Off-loading of cloud connectivity stack and local events monitoring when ISP is powered down to conserve power.
- ✓ Supports up to 2K camera resolution.
- ✓ Wi-Fi provisioning using integrated BLE.

Get to market quickly with application development kit that include hardware, software and design files to give your product design a head-start.



1+ Year Battery Life*



Pre-Integrated Hardware & Software



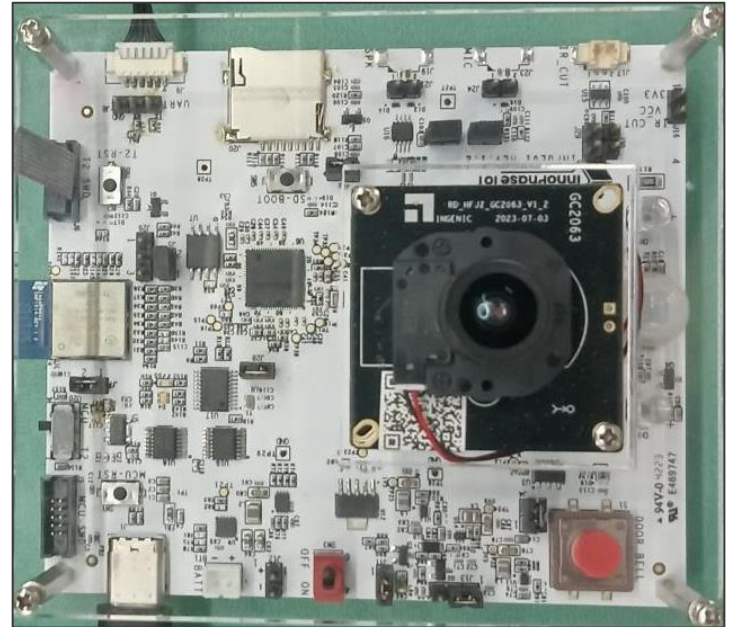
Fast Time-to-Market

Battery-Based Wi-Fi Cameras Video Surveillance Baby Monitors Video Doorbells Event Monitoring



INP2201 InnoPhase IoT Low-Power Wi-Fi Video Camera Reference Kit

- Battery-operated Wi-Fi video camera
- **Ingenic T23 ISP + Talaria TWO INP1014 Module**
- Optional **STM32 Low-Power MCU** – I/O extender & HMI
- 1080P CMOS Image Sensor, Microphone & Speakers
- PIR Sensor, LEDs & Push-button
- USB-C connector and battery connector power supply options
- T23 shut-off control by Talaria TWO or MCU for extended battery-life.
- On-board power measurement test points
- **Fully Integrated Software SDK**
 - T23 Linux drivers and connection manager
 - AWS Kinesis Cloud Connectivity
 - Device Provisioning over BLE
 - Firmware Over-the-Air (FOTA) & Firmware Over-Serial (FOS) Updates (FOTA)
 - Quick Start & User Guides



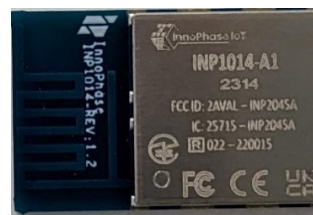
Talaria TWO Wi-Fi + BLE

- **Wi-Fi:** 802.11 b/g/n, up to MCS7 Single-stream (1x1)
- **BLE:** BLE 5.0 w/ Advanced Features: 2Mbps PHY, LE Coding (Long-Range), Extended Advertising
- **Frequency Supported:** 2.4GHz
- **Application Processor:** Arm Cortex-M3, 80MHz
- **Embedded Memories:** 512KB SRAM, 2MB Flash
- **Peripheral Interface to T23:** SDIO
- **Power Consumption:** Ultra-low power Wi-Fi to maintain cloud connectivity for battery-based products
- **Ultra-Low Power Wi-Fi:** 57uA (DTIM10), 31mA (Rx, 802.11b), 81mA (Tx, 802.11n)
- **Optimized Software:** exclusive "Dual-Stack" SW implementation shares processing responsibilities between Talaria TWO and T31 to reduce system current consumption to the lowest level

Learn More: [Talaria TWO Modules](#)

Talaria TWO Wi-Fi + BLE5 Modules

INP1014



PCB Antenna
(20.0 x 12.8 x 2.5mm)

INP1015



U.FL Antenna
(17.0 x 12.8 x 2.5mm)

Contact InnoPhase at sales@innophaseiot.com for a demonstration and access to the Smart Video ADK

* Based on 3000mAh battery